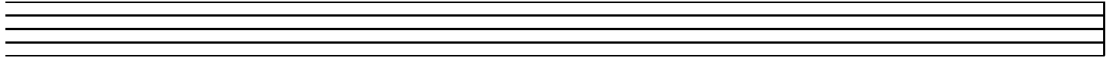


Reading Basics

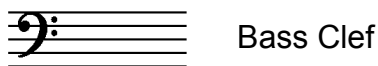
Staff

All music is written on a staff (or staff).



Clefs

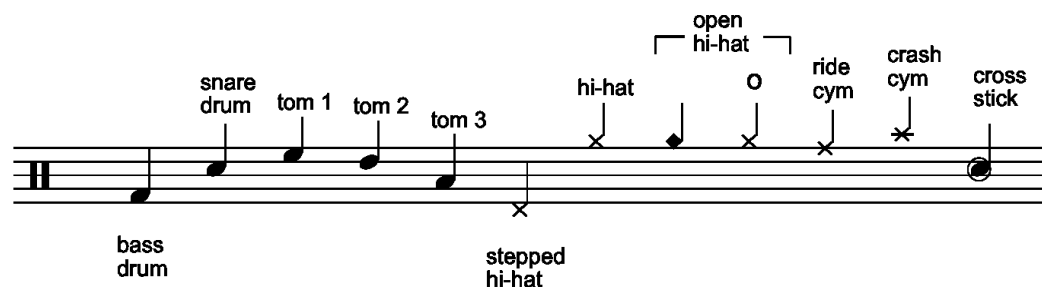
A clef is used to provide a fixed pitch to each degree of the staff.



When dealing with drum kit notation we use percussion clef.



Each degree of the staff represents a voice of the drum kit, as shown below. There is no absolute standard when it comes to drum kit notation. I use this system outlined by the percussive arts society (<http://www.pas.org>) which I've found this to be the most comprehensive.



Time Signatures

A time signature is used to define the length of a bar of music.

Here we have a 4/4 time signature.

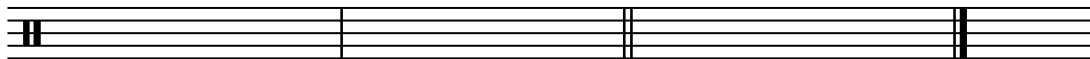
The top note tells us how many pulses (Beats) per bar.



The bottom number defines the value of those pulses. Therefore a 4/4 time signature has four $\frac{1}{4}$ note pulses or beats.

Bars

Bars divide up the music into more digestible chunks to enable us to measure sections such as verse, chorus, bridge etc.



single
barline

double
barline

fine
barline

Single barline - used to separate bars

Double barline - used to signify the end of a passage or section

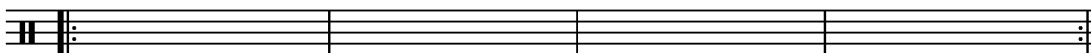
Fine barline – used to signify the end of a piece

Repeat Brackets

Repeat brackets are used when a given number of bars are to be repeated.

This saves writing the same information twice and saves valuable paper.

In the example below 8 bars would be played instead of the usual 4.



Open repeat bracket



Close repeat bracket